

Repair Coupling

維修箍，可作長期使用



The Teekay Repair Coupling is ideal for all situations where you need to make a permanent repair under pressure. Simply open up the coupling, wrap it around the pipe and fasten – you have repaired the pipeline in minutes and avoided the need for costly downtime.

The Repair Coupling comes with no loose parts and features our standard gasket which actively seals onto the pipe. The range is available up to 3000 mm OD and in widths up to 410 mm wide. The Teekay Repair Coupling is used throughout the water, process, oil & gas and marine industries.

Material Selection

Type I

Casing: AISI 304/ DIN 1.4301
Fasteners: Alloy Steel, Coated
Gasket: EPDM/NBR/H-NBR/FKM/VMQ

Type II

Casing: AISI 304/ DIN 1.4301
Fasteners: AISI 316/ 316L
Gasket: EPDM/NBR/H-NBR/FKM/VMQ

Type IV

Casing: AISI 316L/ DIN 1.4404
Fasteners: AISI 316/ 316L
Gasket: EPDM/NBR/H-NBR/FKM/VMQ

Type V

Casing: High strength steel
Coating: Rilsan/PVC/
Epoxy/Galvanized
Fasteners: Alloy Steel, Coated
Gasket: EPDM/NBR/H-NBR/FKM/VMQ

Type VI

Casing: High strength steel
Coating: Rilsan/PVC/
Epoxy/Galvanized
Fasteners: AISI 316/ 316L
Gasket: EPDM/NBR/H-NBR/FKM/VMQ



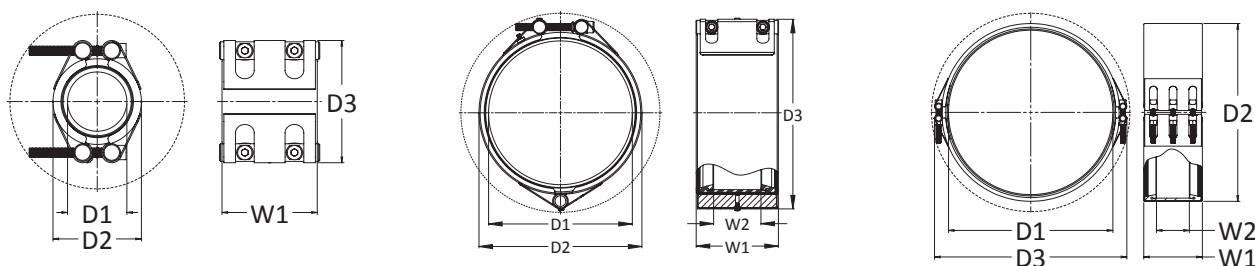
Sizes: 48.3 mm to 3000.0 mm

Gaskets: EPDM -40°C to +100°C, NBR -20°C to +80°C, HNBR -20°C to +130°C, Viton -20°C to +250°C, Silicone -70°C to +270°C (*depending on grade*)

Pipe Materials: Carbon steel, cast and ductile iron, stainless steel, copper, cunifer, GRP, asbestos cement, HDPE, MDPE, PVC, uPVC, ABS

1.4462 Duplex casings and fasteners available on request.

Repair Coupling Dimensio



D1 Pipe O.D.	Pipe Nominal Bore	Available Coupling Widths:						Working Pressure Available in the following PN ratings:	W2	D2 Coupling O.D. = D1 (mm) + the following:
	(mm)	85 mm	110 mm	140 mm	210 mm	310 mm	410 mm		(mm)	(mm)
Teekay Repair Couplings are available to suit any pipe O.D. up to 3000 mm. Please contact us with OD prior to order placement.	40	●						16 / 25 / 40	42	20
	50	●						16 / 25 / 40	42	20
	75		●					16 / 25 / 40	67	22
	100		●					16 / 25 / 40	67	22
	150		●	●				16 / 25 / 40	67 / 80	22 / 28
	200		●	●	●			16 / 25 / 40	67 / 80 / 120	22 / 28 / 42
	250		●	●	●			16 / 25 / 40	67 / 80 / 120	22 / 28 / 42
	300		●	●	●	●	●	10 / 16 / 25	67 / 80 / 120 / 220 / 320	22 / 28 / 42 / 42 / 42
	350			●	●	●	●	10 / 16 / 25	80 / 120 / 220 / 320	28 / 42 / 42 / 42
	400			●	●	●	●	10 / 16 / 25	80 / 120 / 220 / 320	28 / 42 / 42 / 42
	450			●	●	●	●	10 / 16 / 25	80 / 120 / 220 / 320	28 / 42 / 42 / 42
	500			●	●	●	●	6 / 10 / 16	80 / 120 / 220 / 320	28 / 42 / 42 / 42
	600			●	●	●	●	6 / 10 / 16	80 / 120 / 220 / 320	28 / 42 / 42 / 42
	700			●	●	●	●	6 / 10 / 16	80 / 120 / 220 / 320	28 / 42 / 42 / 42
	800			●	●	●	●	6 / 10 / 16	80 / 120 / 220 / 320	28 / 42 / 42 / 42
	900			●	●	●	●	2.5 / 6 / 10	80 / 120 / 220 / 320	28 / 42 / 42 / 42
	1000			●	●	●	●	2.5 / 6 / 10	80 / 120 / 220 / 320	28 / 42 / 42 / 42
	1100			●	●	●	●	2.5 / 6 / 10	80 / 120 / 220 / 320	28 / 42 / 42 / 42
	1200			●	●	●	●	2.5 / 6 / 10	80 / 120 / 220 / 320	28 / 42 / 42 / 42
	1300			●	●	●	●	2.5 / 6	80 / 120 / 220 / 320	28 / 42 / 42 / 42
	1400			●	●	●	●	2.5 / 6	80 / 120 / 220 / 320	28 / 42 / 42 / 42
	1500			●	●	●	●	2.5 / 6	80 / 120 / 220 / 320	28 / 42 / 42 / 42
	1600				●	●	●	2.5 / 6	120 / 220 / 320	42 / 42 / 42
	1700				●	●	●	2.5 / 6	120 / 220 / 320	42 / 42 / 42
	1800				●	●	●	2.5 / 6	120 / 220 / 320	42 / 42 / 42
	1900				●	●	●	2.5 / 6	120 / 220 / 320	42 / 42 / 42
	2000				●	●	●	2.5 / 6	120 / 220 / 320	42 / 42 / 42
	2100				●	●	●	2.5	120 / 220 / 320	42 / 42 / 102
	2200				●	●	●	2.5	120 / 220 / 320	42 / 42 / 102
	2300				●	●	●	2.5	120 / 220 / 320	42 / 42 / 102
	2400				●	●	●	2.5	120 / 220 / 320	42 / 42 / 102
	2500				●	●	●	2.5	120 / 220 / 320	42 / 42 / 102
	2600				●	●	●	2.5	120 / 220 / 320	42 / 42 / 102
	2700				●	●	●	2.5	120 / 220 / 320	42 / 42 / 102
	2800				●	●	●	2.5	120 / 220 / 320	42 / 42 / 102
	2900				●	●	●	2.5	120 / 220 / 320	42 / 42 / 102
	3000				●	●	●	2.5	120 / 220 / 320	42 / 42 / 102

As illustrated above, Teekay Repair Couplings can be supplied in hinged or double lockpart versions to suit applications where tolerance or accessibility may be critical.

Installation Guide

Repair Coupling

Suitable also for permanent use.

3. Repair Coupling Installation

(Axiflex couplings that can be opened and wrapped around the pipe)

- Loosen the coupling screws.
- Place the opened coupling around the pipe.



- Insert the loose end of the gasket into the "tongue" located on the other side of the coupling.



- Make sure that the two ends of the gasket are flush against each other.



- Using a torque wrench, tighten the screws evenly, alternating from screw to screw until **both** "click off". **Make sure you comply with the required torque.** (See information on the label, description on Page 45.)
- For Axiflex, Repair- & Stepped Couplings > 600 mm lubricate pipe ends prior to installation.
- Use a soft mallet on the casing during tightening to ensure uniform gasket compression.



4. After Installation

- Check that the lockpart is parallel.

Torque

The couplings do not require any maintenance and must not be retightened once the torque has been reached. We recommend you mark the coupling once the screws have been torqued up. This will ensure that you and others know that the screws have been tightened.

If you are unsure as to whether the screws have already been tightened, loosen the screws completely and repeat the installation from scratch.

Please observe the following instructions prior to, during and after the dismantling of the coupling.

1. Prior to Dismantling

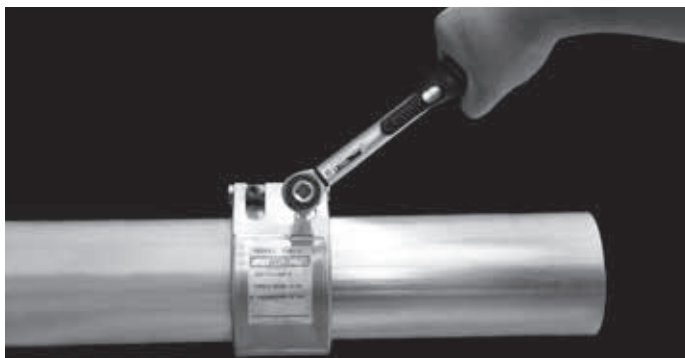
- Ensure that there is no pressure in the pipes at the joint to be removed.



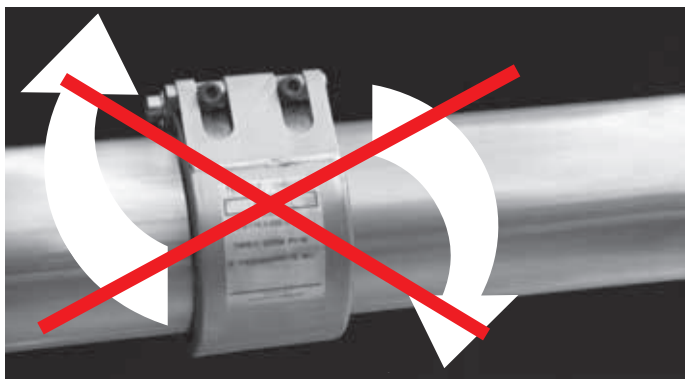
- Protect yourself and equipment from spilling liquid.
- Make sure the pipe coupling is not supporting the pipe ends.

2. Dismantling the Coupling

- Loosen the screws evenly by alternating between them but do not remove completely.



- Do not rotate the pipe coupling on the pipe as long as the anchor teeth are engaged (Axilock only).



Removal of the coupling

Slide the coupling off the pipe cautiously. Make sure that the gasket sealing lips are not damaged in the process.



- Clean the coupling.



Condition of the seal

If the end seal of the Axilock coupling is partially severed, you can reinsert it.

(The purpose of the end seal is to protect the anchor ring.)

