

## MODULATING FLOAT VALVE

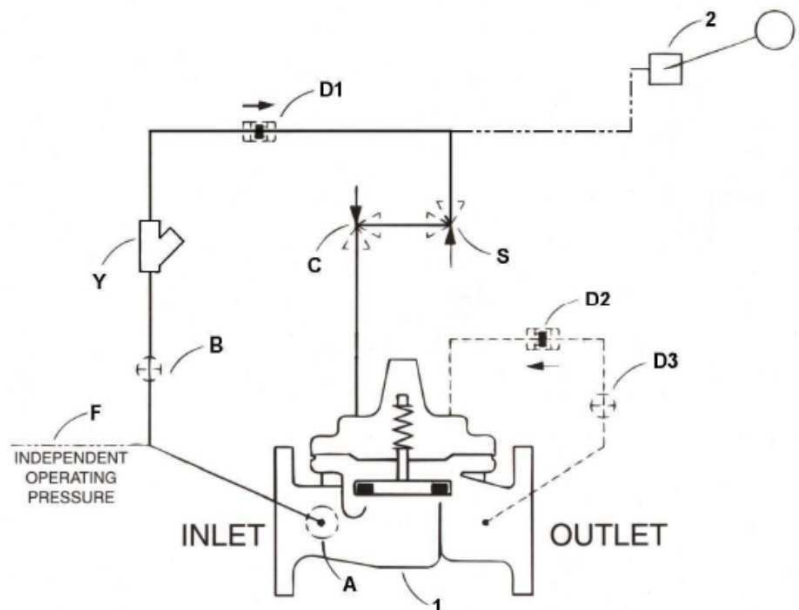


- 316 Stainless Steel Trim
- Accurate & Repeatable Level Control
- Modulating (Proportional Flow Type)
- Automatic Reliable Hydraulic Operation
- Drip Tight Positive Shut-off

The Cla-Val NGE, GE & AE Series Modulating Float Valve maintains a relatively constant level in storage tanks and reservoirs by admitting flow into the tank in direct proportion to the flow out of the tank. It is a hydraulically operated, pilot controlled, diaphragm valve. The rotary disc type float operated pilot control is installed at the high liquid level in the reservoir and is connected via tubing or pipe to the main valve. As the liquid level changes, the float control proportionally opens or closes the main valve, keeping the liquid level nearly constant. If the check feature option is added and a pressure reversal occurs, the downstream pressure is admitted into the main valve cover chamber and the valve closes to prevent return flow.

### Schematic Diagram

Item	Description
1	Hytrol (NGE, GE or AE Main Valve)
2	CF9 Float Control
Y	"Y" Strainer

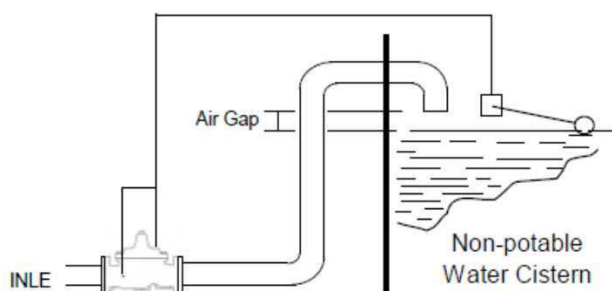
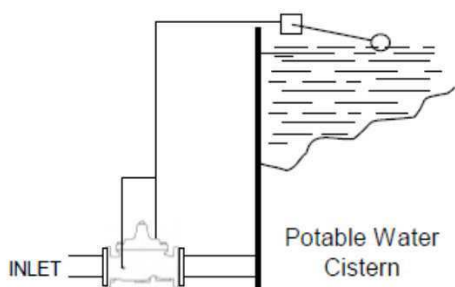


### Optional Features

Item	Description
A	X46A Flow Cleaner Strainer
C	CV Flow Control (Closing)
D	Check Valves With Cock
F	Independent Operating Pressure
S	CV Flow Control (Opening)
B	Spherical Valves

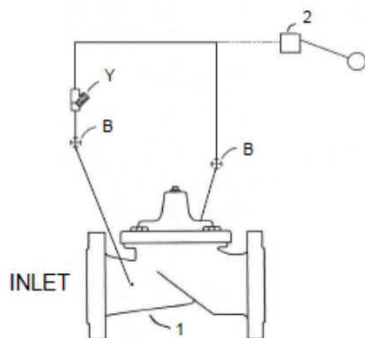
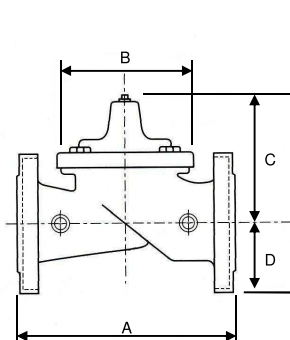
### Typical Installations

If the installation of the valve is placed on a potable water cistern, no installation notes are required (both method "A" and "B")  
 If the installation of the valve is placed on a non-potable water storage cistern, then the control valve and pilot valve shall be installed with an air gap to meet risk of the contaminant within the storage cistern (method "B" only)



# Modulating Float Valve

**NGE Series** Model: 629-01 (Uses Basic Valve Series "NGE")



**NGE Series Hytrol Valve**

## Dimensions

Size inch (mm)	50	65	80	100	150	200	250	300	350	400	500	600	750	900	1000
A	216	279	260	353	451	543	660	762	870	989	1219	1219	1687	1651	1930
B	143	203	168	232	292	400	508	600	698	711	900	900	1351	1422	1676
C	140	192	178	219	295	381	454	533	530	634	800	800	1118	1387	1562
D	64	89	95	114	140	171	203	244	279	298	370	432	505	648	744

## Pressure Ratings (Recommended Maximum Pressure - psi)

Valve Body & Cover		Pressure Class		
		Flanged *		Screwed
Grade	Material	ANSI Standard	BS EN Standard	End Details
ASTM A536 (BSEN 1563)	Ductile Iron	Class 150	PN16	N/A
		250 psi		
Note: * Flanged valves comply with BSEN 1092 drilling				

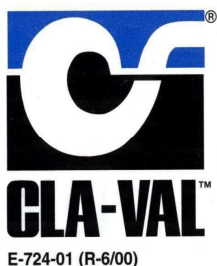
Note: \* Flanged valves comply with BSEN 1092 drilling

## Materials

Body & Cover	Ductile Iron (BS EN1563)*
Disc Trim (Guide)	Stainless Steel (BS EN10283 Gr.1.4408)
Seat	Stainless Steel (BS EN10283 Gr.1.4408)**
Diaphragm	EPDM Rubber (WRAS Approved)
Stem	Austenitic Chromium Nickel Stainless Steel (BS EN10088 Gr.1.4401)

\* With Internal & External Epoxy coating (Blue Color)

\*\*With Teflon Coated For Sea Water Application



## CLA-VAL

PO Box 1325 Newport Beach CA 92659-0325  
Phone: 949-722-4800 • Fax: 949-548-5441

### CLA-VAL CANADA, LTD.

4687 Christie Drive  
Beamsville, Ontario  
Canada LOR 1B4  
Phone: 905-563-4963  
Fax: 905-563-4040

©COPYRIGHT CLA-VAL 2000 Printed in USA  
Specifications subject to change without notice.

### CLA-VAL SA

Chemin des Mesanges 1  
CH-1032 Romanel/  
Lausanne, Switzerland  
Phone: 41-21-643-15-55  
Fax: 41-21-643-15-50

www.cla-val.com

Represented By: