

Repair Clamp



The Teekay Repair Clamp is the budget repair coupling of choice. Featuring “cut flanges” on the underside of the fitting, this type of coupling can be easily pulled around a leaking pipe to seal a fracture. Once wrapped around the pipe, the fitter then goes about installing the coupling in the same manner as any other Teekay coupling.

Suitable for emergency repairs in buildings and industrial units to avoid costly reinstatement work caused by water damage. The Teekay Repair Clamp represents excellent value for money both at point of order and at point of use, as significant installation time savings can be achieved with the light-weight stainless steel design.

Material Selection

Type I

Casing: AISI 304/ DIN 1.4301
Fasteners: Alloy Steel, Coated
Gasket: EPDM/NBR/H-NBR/FKM/VMQ

Type II

Casing: AISI 304/ DIN 1.4301
Fasteners: AISI 316/ 316L
Gasket: EPDM/NBR/H-NBR/FKM/VMQ

Type IV

Casing: AISI 316L/ DIN 1.4404
Fasteners: AISI 316/ 316L
Gasket: EPDM/NBR/H-NBR/FKM/VMQ

1.4462 Duplex casings and fasteners available on request.

Sizes:

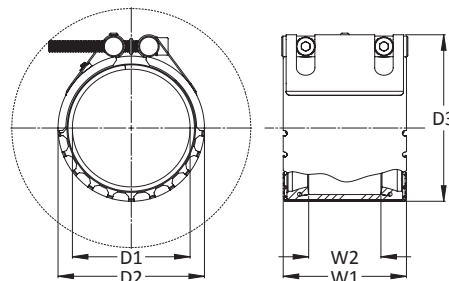
48.3 mm to 323.9 mm

Gaskets:

EPDM -40°C to +100°C, NBR -20°C to +80°C, HNBR -20°C to +130°C, Viton -20°C to +250°C Silicone -70°C to +270°C (*depending on grade*)

Pipe Materials:

Carbon steel, cast and ductile iron, stainless steel, copper, cunifer, GRP, asbestos cement, HDPE, MDPE, PVC, uPVC, ABS



NOTES:

The table below is a guide to the most common sizes. Couplings to suit specific outside diameters not listed may be manufactured to order. Please contact us for further details.

Minimum burst is 1.5 times working pressure. Figures are based on typical values for standard wall carbon steel pipe. For use on thin or soft pipe materials such as thin wall stainless, copper alloy or plastic (by way of example only) please check with us first.

D1 Pipe O.D.	Pipe Nominal Bore		W1	W2	D2 Coupling O.D. = D1 (mm) + the following:	D3 Overall Coupling O.D. = D1 (mm) + the following:	No. of Screws	Approximate Weight	Maximum Allowable Tolerance on Pipe O.D. +/-
	(mm)	(bar)	(mm)	(mm)	(mm)	(mm)		(KG)	(mm)
Teekay Repair Clamps are available to suit any pipe O.D. from 48.3 mm up to 323.9 mm. Please contact us with O.D. prior to order placement.	40	16	85	42	20	39	2 x M8	1	1
	50	16	85	42	20	39	2 x M8	1.1	1
	65	16	85	42	20	39	2 x M8	1.3	1
	80	16	85	42	20	39	2 x M8	1.5	1
	100	16	85	42	20	39	2 x M8	1.6	1
	150	16	110	67	22	44	2 x M10	2.5	2
	200	12	110	67	22	44	2 x M10	3.2	2
	250	6	110	67	22	44	2 x M10	3.5	2
	300	6	110	67	22	44	2 x M10	3.8	2