



— Model —

90-01

690-01

食水用



- Sensitive and Accurate Pressure Control
- Easy Adjustment and Maintenance
- Tamper Resistant
- Fully Supported Frictionless Diaphragm

The Cla-Val NGE, GE & AE series Pressure Reducing Valve automatically reduces a higher inlet pressure to a steady lower downstream pressure regardless of changing flow rate and/ or varying inlet pressure. This valve is an accurate, pilot-operated regulator capable of holding downstream pressure to a pre-determined limit. When downstream pressure exceeds the pressure setting of the control pilot, the main valve and pilot valve close drip tight.

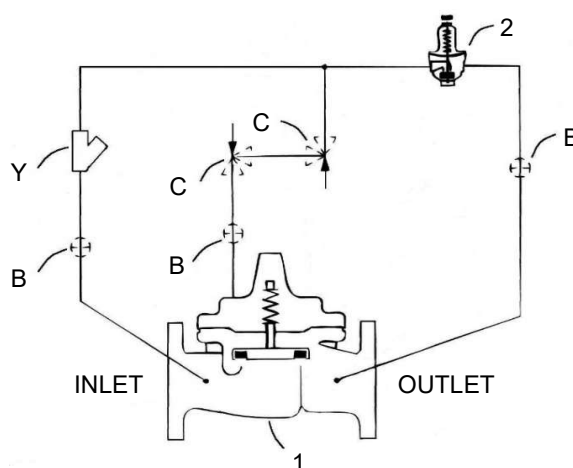
## Schematic Diagram

Model: 90-01 & 690-01

Item	Description
1	Hytrol (NGE, GE or AE Main Valve)
2	CRD Pressure Reducing Pilot
B	Spherical Valves
Y	"Y" Strainer

## Optional Features

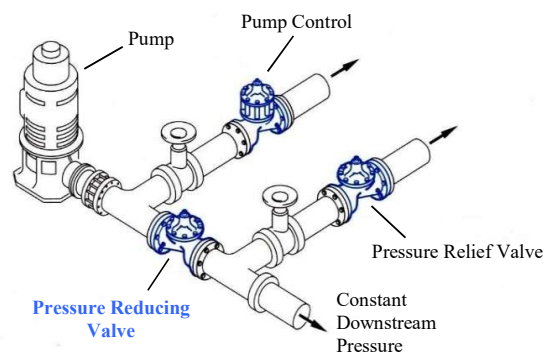
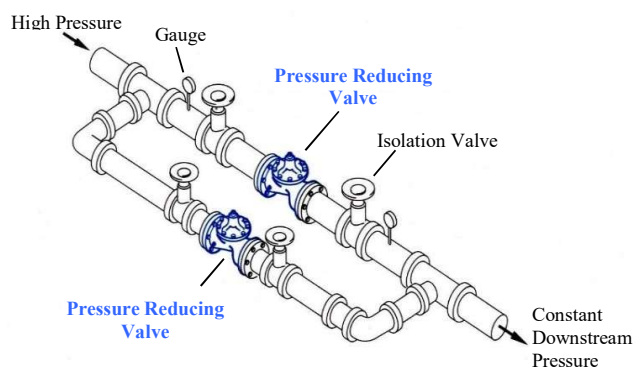
Item	Description
C	CV Flow Control Valve (Opening / Closing Speed Control)



## Typical Applications

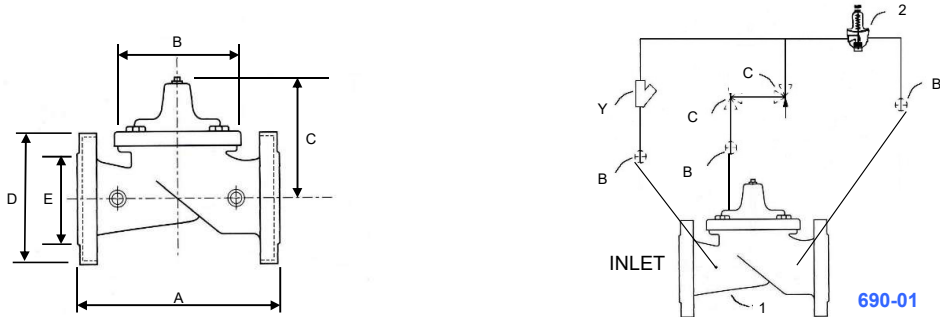
Typical pressure reducing valve station using NGE, GE or AE series in parallel to handle wide range of flow rates. Larger size valve takes care of peak loads and

The NGE, GE or AE series Pressure Reducing Valve is installed downstream of a pump where a constant system pressure is required.



# Pressure Reducing Valve

**NGE Series** Model: 690-01 - Uses Basic Valve Series NGE



## Dimensions

Size inch (mm)	65	80	100	150	200	250	300	350	400
A	279	260	353	451	543	660	762	870	889
B	203	168	232	292	400	508	600	698	711
C	192	178	219	295	381	454	533	530	654
D - Flange OD	200	200	220	285	342	406	482	530	582
E - Inlet Bore	65	78	101	152	203	253	300	355	405

## Pressure Ratings (Recommended Maximum Pressure - psi)

Valve Body & Cover		Pressure Class
		Flanged Drill
Grade	Material	BSEN1092-2
BSEN 1563	Ductile Iron	PN16
		250 psi

## Materials

*Body	Ductile Iron Grade EN-GJS-450-10
*Cover	
Disc Trim (Guide)	316 Stainless Steel BS EN10283 Gr.1.4408
Seat	316 Stainless Steel BS EN10283 Gr.1.4408
Diaphragm	EPDM Rubber (WRAS Approved)
Stem	316 Stainless Steel BS EN10088 :2024 Gr.1.4401

\*Note: With Internal & External Epoxy coating (Blue Color- WRAS Approved)



## CLA-VAL

PO Box 1325 Newport Beach CA 92659-0325  
Phone: 949-722-4800 • Fax: 949-548-5441

### CLA-VAL CANADA, LTD.

4687 Christie Drive  
Beamsville, Ontario  
Canada LOR 1B4  
Phone: 905-563-4963  
Fax: 905-563-4040

### CLA-VAL SA

Chemin des Mesanges 1  
CH-1032 Romanel/  
Lausanne, Switzerland  
Phone: 41-21-643-15-55  
Fax: 41-21-643-15-50

©COPYRIGHT CLA-VAL 2000 Printed in USA  
Specifications subject to change without notice.

[www.cla-val.com](http://www.cla-val.com)

Represented By:



— Model —

90-01S

690-01S

咸水用



- Sensitive and Accurate Pressure Control
- Easy Adjustment and Maintenance
- Tamper Resistant
- Fully Supported Frictionless Diaphragm

The Cla-Val NGE, GE & AE series Pressure Reducing Valve automatically reduces a higher inlet pressure to a steady lower downstream pressure regardless of changing flow rate and/ or varying inlet pressure. This valve is an accurate, pilot-operated regulator capable of holding downstream pressure to a pre-determined limit. When downstream pressure exceeds the pressure setting of the control pilot, the main valve and pilot valve close drip tight.

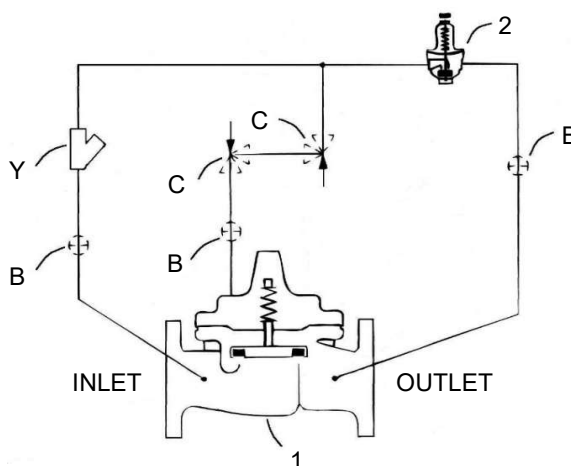
### Schematic Diagram

Model: 90-01S & 690-01S

Item	Description
1	Hytrol (NGE, GE or AE Main Valve)
2	CRD Pressure Reducing Pilot
B	Spherical Valves
Y	"Y" Strainer

### Optional Features

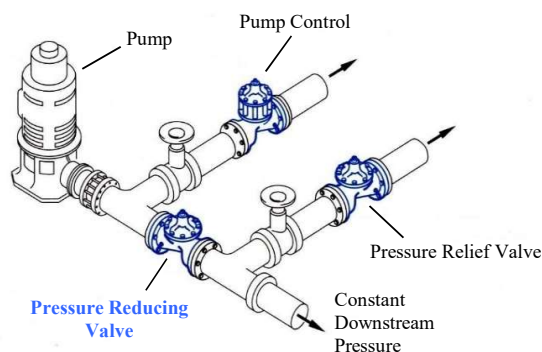
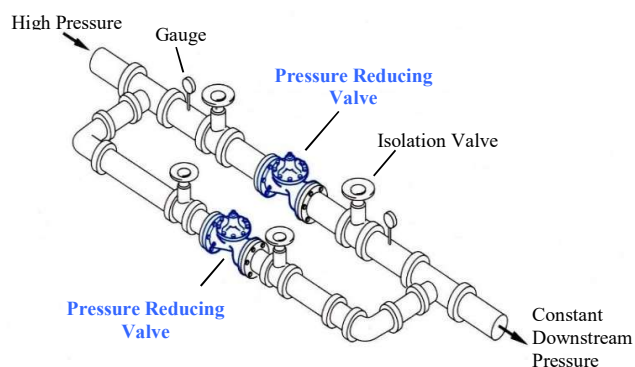
Item	Description
C	CV Flow Control Valve (Opening / Closing Speed Control)



### Typical Applications

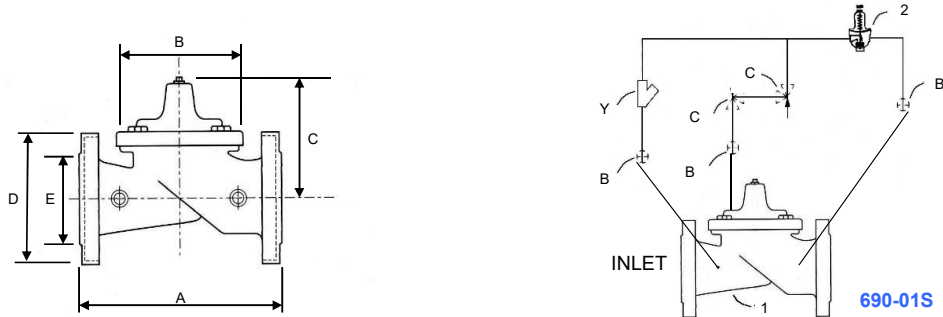
Typical pressure reducing valve station using NGE, GE or AE series in parallel to handle wide range of flow rates. Larger size valve takes care of peak loads and

The NGE, GE or AE series Pressure Reducing Valve is installed downstream of a pump where a constant system pressure is required.



# Pressure Reducing Valve

**NGE Series** Model: 690-01S - Uses Basic Valve Series NGE



## Dimensions

Size inch (mm)	65	80	100	150	200	250	300	350	400
A	279	260	353	451	543	660	762	870	889
B	203	168	232	292	400	508	600	698	711
C	192	178	219	295	381	454	533	530	654
D - Flange OD	200	200	220	285	342	406	482	530	582
E - Inlet Bore	65	78	101	152	203	253	300	355	405

## Pressure Ratings (Recommended Maximum Pressure - psi)

Valve Body & Cover		Pressure Class
		Flanged Drill
Grade	Material	BSEN1092-2
BSEN 1563	Ductile Iron	PN16
		250 psi

## Materials

*Body & Cover	Ductile Iron Grade EN-GJS-450-10
Disc Trim (Guide)	316 Stainless Steel BS EN10283 Gr.1.4408
Seat	316 Stainless Steel BS EN10283 Gr.1.4408 with Telfon Coated For Sea Water
Diaphragm	EPDM Rubber (WRAS Approved)
Stem, Nut & Spring	316 Stainless Steel BS EN10088 :2024 Gr.1.4401

\*Note: With Internal & External Epoxy coating (Blue Color- WRAS Approved)



## CLA-VAL

PO Box 1325 Newport Beach CA 92659-0325  
Phone: 949-722-4800 • Fax: 949-548-5441

### CLA-VAL CANADA, LTD.

4687 Christie Drive  
Beamsville, Ontario  
Canada LOR 1B4  
Phone: 905-563-4963  
Fax: 905-563-4040

©COPYRIGHT CLA-VAL 2000 Printed in USA  
Specifications subject to change without notice.

### CLA-VAL SA

Chemin des Mesanges 1  
CH-1032 Romanel/  
Lausanne, Switzerland  
Phone: 41-21-643-15-55  
Fax: 41-21-643-15-50

[www.cla-val.com](http://www.cla-val.com)

Represented By: